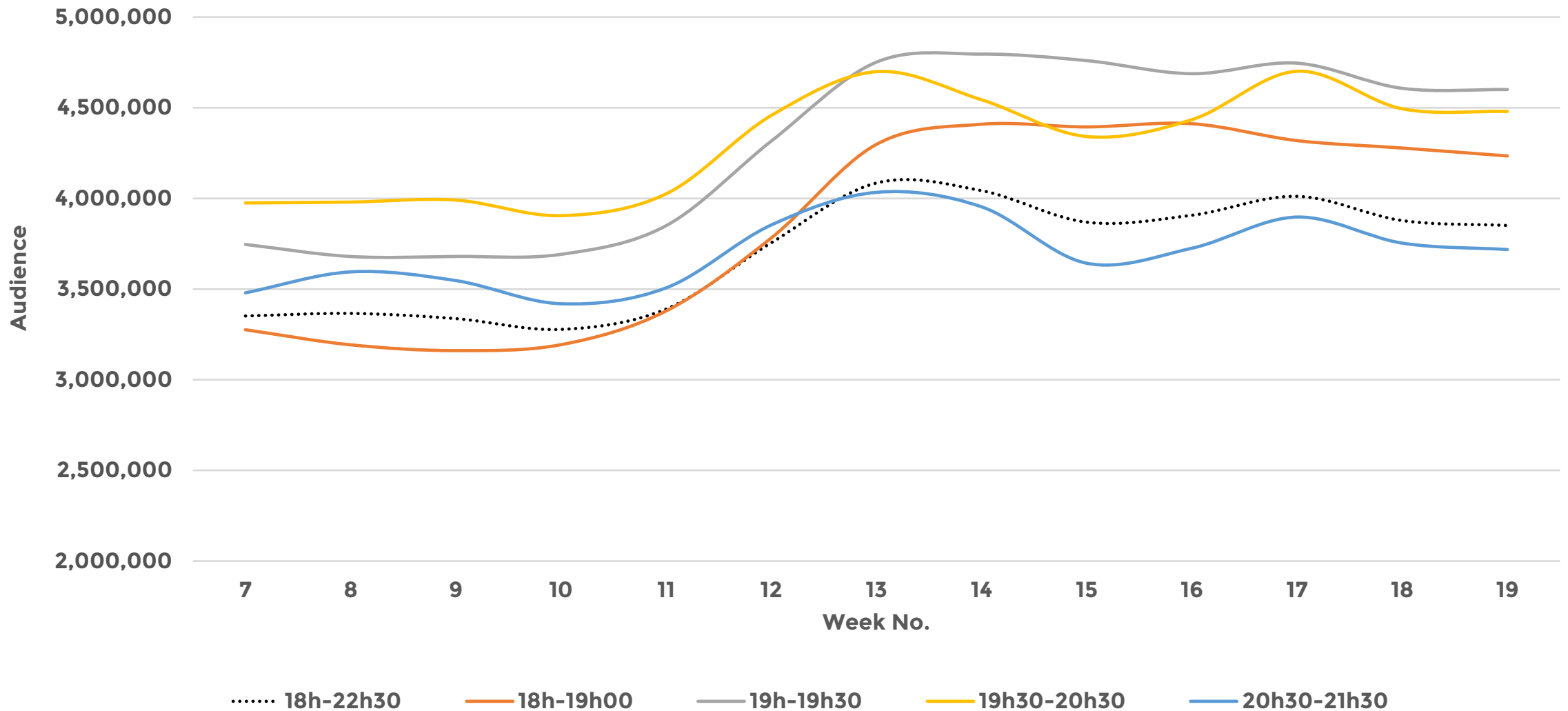


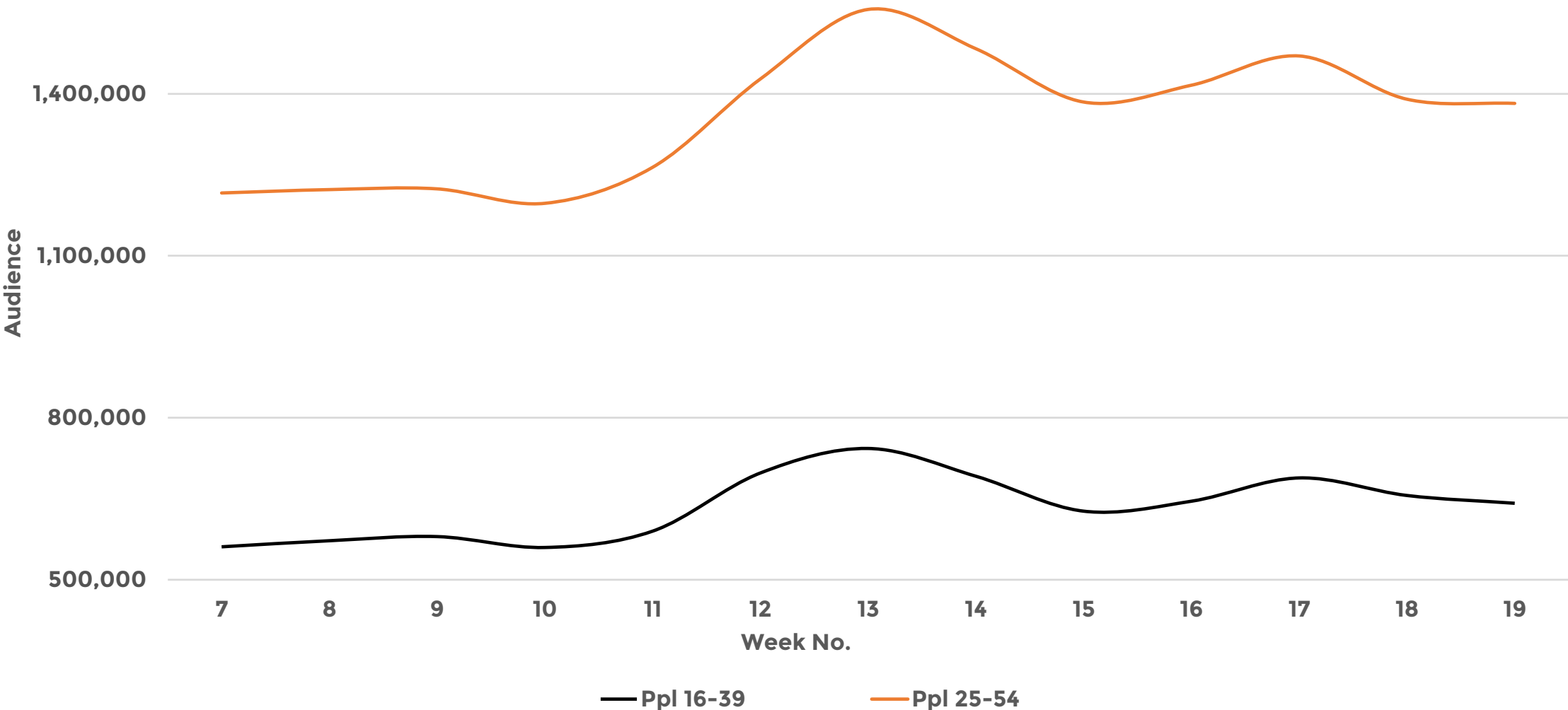
Weekly Tracking & Co-Viewing Data

TRACKING AUSTRALIA'S TV CONSUMPTION THROUGH COVID19
WEEK 19 2020 (03/05/2020 to 09/05/2020)

Timeslot Viewing in Primetime | 5 City Metro | Total TV, Total People

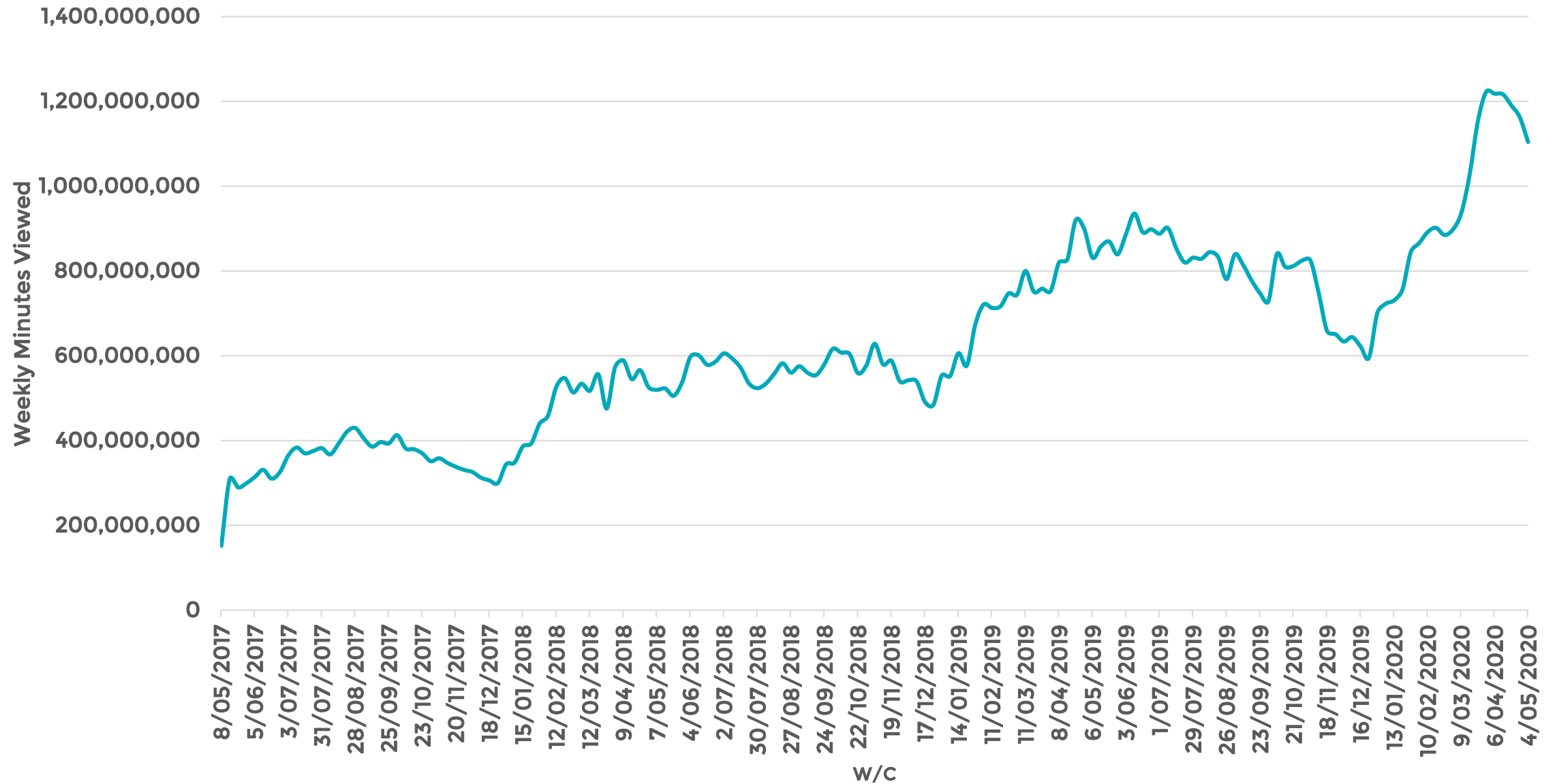


Key Demographic Viewing Levels in Primetime | 5 City Metro | Total TV



Source: OzTAM Metro Overnights 5CM, Total TV; 18h00-22h30

Broadcaster Weekly Minutes Viewed



Source: OzTam VPM May 2017-May 2020 Live & VOD FTA+Foxtel Minutes

Linear TV and BVOD | Week on Week Movement (%)

Linear TV		wk8-11 2020	wk18 2020	Wk19 2020	Wk19 v Wk18	Wk19 v Wk8-11
Total Individuals	ALL DAY (02h-02h00)	1,301,000	1,535,000	1,497,000	-2.5%	15.1%
	07h-09h00	971,000	1,135,000	1,080,000	-4.8%	11.2%
	09h-18h00	1,143,000	1,427,000	1,363,000	-4.5%	19.2%
	18h-22h30	3,343,000	3,878,000	3,851,000	-0.7%	15.2%
Ppl 16-39	ALL DAY (02h-02h00)	205,000	242,000	232,000	-4.1%	13.2%
	07h-09h00	137,000	164,000	154,000	-6.1%	12.4%
	09h-18h00	163,000	202,000	190,000	-5.9%	16.6%
	18h-22h30	576,000	656,000	642,000	-2.1%	11.5%
Ppl 25-54	ALL DAY (02h-02h00)	460,000	532,000	519,000	-2.4%	12.8%
	07h-09h00	319,000	390,000	371,000	-4.9%	16.3%
	09h-18h00	364,000	447,000	427,000	-4.5%	17.3%
	18h-22h30	1,227,000	1,390,000	1,382,000	-0.6%	12.6%
BVOD		wk8-11 2020	wk18 2020	wk19 2020	Wk19 v Wk18	Wk19 v Wk8-11
BVOD Minutes	ALL DAY	904,814,000	1,163,019,000	1,104,122,000	-5.1%	22.0%

Source: OzTAM Metro Overnights 5CM, Total TV; OzTam VPM wk8-19 2020 Live & VOD FTA+Foxtel Minutes

Commercial channel news slots | Audience change week on week

		Work Week					
Day Part	Target \ Week No.	wk8-11 2020	wk18 2020	wk19 2020	Wk19 v Wk18	Wk19 v Wk8-11	
Shareholder News Slots (wkday)	05h30-07h00	Total Individuals	110,000	104,000	96,000	-8.4%	-13.2%
		Ppl 0-17	4,000	3,000	2,000	-24.1%	-47.1%
		Ppl 18-24	1,000	1,000	1,000	5.1%	-56.6%
		Ppl 25-54	47,000	43,000	37,000	-14.2%	-22.4%
		Ppl 55+	58,000	58,000	56,000	-3.5%	-2.6%
	07h-09h00	Total Individuals	231,000	267,000	252,000	-5.6%	8.9%
		Ppl 0-17	13,000	12,000	13,000	2.9%	-5.2%
		Ppl 18-24	2,000	2,000	2,000	-13.1%	-11.6%
		Ppl 25-54	80,000	101,000	95,000	-5.6%	18.6%
		Ppl 55+	135,000	151,000	142,000	-6.1%	4.9%
	17h-18h00	Total Individuals	355,000	476,000	457,000	-3.9%	28.8%
		Ppl 0-17	13,000	23,000	26,000	14.7%	98.8%
		Ppl 18-24	6,000	9,000	7,000	-17.6%	17.4%
		Ppl 25-54	111,000	165,000	157,000	-4.8%	41.4%
		Ppl 55+	224,000	279,000	266,000	-4.4%	18.7%
	18h-19h00	Total Individuals	855,000	1,154,000	1,128,000	-2.2%	31.9%
		Ppl 0-17	38,000	57,000	56,000	-0.8%	48.7%
		Ppl 18-24	17,000	25,000	24,000	-7.3%	38.0%
		Ppl 25-54	232,000	336,000	331,000	-1.5%	42.6%
		Ppl 55+	568,000	736,000	718,000	-2.5%	26.3%

Source: OzTAM Metro Overnights 5CM, Shareholder News Slots (05h30-09h00- ch7,9; 17h-18h00-ch10; 18h-19h00- ch7,9)